

Essential Oil Components of Leaves and Rhizome of *Zingiber ottensii* Val. from Bandung, Indonesia

Marliani L.^{1,2*}, Subarnas A.¹, Moelyono M.W.¹, Halimah E.¹, Pratiwi F.W.² and Suhardiman A.²

1. Faculty of Pharmacy, Padjadjaran University, Bandung, West Java, INDONESIA

2. Bandung School of Pharmacy, Bandung, West Java, INDONESIA

*lia.marliani@stfb.ac.id

Abstract

Bangle hantu (Zingiber ottensii Val.) is one of Indonesian traditional medicine as postpartum medicine and also to treat itching, pain, fever, gout, and cough. The essential oil is one of chemical compound of Zingiber ottensii Val. that has pharmacological activity such as antibacterial and cytotoxic activity. The aim of this study was to determine the essential oil component of Zingiber ottensii Val leaves and rhizome which originated from Bandung, Indonesia. The essential oil was distilled by water and steam distillation method and its component compounds were analyzed by GC-MS (Gas Chromatography - Mass Spectrometer).

The result showed that the essential oil of Zingiber ottensii Val. leaves contains 37 components with five highest compounds respectively as trans-caryophyllene, β -elemene, zerumbone, 1,5-cyclodecadiene, (-)-caryophyllene while essential oil of rhizome contains 64 components with five highest compounds respectively as 1-4-terpineol, zerumbone, sabinene, 1,8-cineole, and γ -terpinene.

Keywords: Essential oil, distillation, GC-MS, *Zingiber ottensii*.

Introduction

Zingiber ottensii Val. (Genus *Zingiber*, family Zingiberaceae) is one of Indonesian medicinal plant that traditionally has been used as postpartum medicine and also to treat itching, pain, fever, gout, and cough. Study *in vitro* of *Zingiber ottensii* Val. rhizome and its compounds showed pharmacological activities including α -glucosidase inhibitor, ACE inhibitor, antibacterial, antifungal, inhibitor of nitric oxide production, antioxidant, cytotoxic, and antiproliferation.^{4,7,9,11,17,18}

Zingiber ottensii Val. rhizomes are pungent and contain essential oil that has moderate cytotoxic activity¹⁶. The essential oil of *Z. ottensii* Val. rhizome contains a mixture of zerumbone, terpinen-4-ol, p-cymene, sabinene, humulene^{13,16}.

Essential oils are complex mixture of volatile compounds, mainly represented by mono- and sesquiterpene and their oxygenated (hydroxyl and carbonyl) derivatives, aliphatic aldehydes, alcohols, and esters. The composition of

essential oil often differs between different plant organs, time of harvest or environmental condition². Essential oils of Zingiberaceae family including *Zingiber ottensii* Val. are produced by rhizome and leaves.

Although there are several reports on the component of essential oil from *Zingiber ottensii* Val. rhizome (cultivated in Thailand and Malaysia), the objective of this study was to determine the main components of essential oil from different organs of *Zingiber ottensii* Val. cultivated in Bandung, West Java, Indonesia.

Material and Methods

Plant material: Fresh leaves and rhizomes were collected from Manoko research garden, Bandung, West Java, Indonesia in the month of February, 2017. The plant was identified and determined at Herbarium Bandungense, Departemen of Biology, Institut Teknologi Bandung (Document no. 1567/11.CO2.2/PL/2017).

Isolation of essential oils: Fresh rhizome and leaves were distilled by water-steam distillation methods using water-steam distiller for 2 hours until no more oil was distilled. The oils obtained were dried over anhydrous sodium sulphate. The essential oils of leaves and rhizome respectively were 0.03% and 0.26% on fresh weight basis.

GC-MS analysis: The essential oils were analysed by Shimadzu GCMS-QP2010 Ultra using DB-5 column (30 m, ID 0.25 mm, 0.25 μ m film thickness), temperature column 60°C, injection temperature 280°C, split mode (split ratio 1:200), linear velocity 41.7 cm/sec, pressure 80.2 kPa; column flow 1.31 mL/min. Carrier gas was Helium. Compounds were identified by comparing MS spectra of each peak with Wiley7.LIB library.

Results and Discussion

The essential oils obtained by water-steam distillation of leaves and rhizome respectively were 0.03% and 0.26% on fresh weight basis. Both oils have characteristics pale yellow colour and pungent aromatic odour. The low percentage yield of leaves showed that essential oil production of *Zingiber ottensii* Val. is concentrated in rhizome.

The chromatogram of leaves and rhizome oil are shown in figure 1 and figure 2. The chromatograms showed that leaves of oil contain 37 components and rhizome oil contains 64 components.

Table 1 describes the component comparison of leaves and rhizome oil of *Zingiber ottensii* Val. from Bandung, Indonesia. According to GC-MS analysis, trans-caryophyllene (19.6%) was detected as the main component of leaves oil and other component including β -elemene (12.3%), zerumbone (11.4%), 1,5-cyclodecadiene (7.74%), (-)-caryophyllene (6.93%), α -humulene (4.87%), α -copaene (3.6%), 2- β -pinene (3.15%), γ -gurjunene (2.91%), and sabinene (2.76%) while essential oil of rhizome was rich in 1-4-terpineol (16.55%), zerumbone (14.23%), sabinene (8.6%), 1,8-cineole (5.84%), and γ -terpinene (4.75%). Figure 3 and figure 4 showed MS-spectra of trans-caryophyllene and 1-4-terpineol.

The most abundant component of rhizome oil of *Zingiber ottensii* Val. from Bandung (1-4-terpineol) is different from Sabah, Malaysia¹³ and Phetchaburi province, Thailand¹⁶

which is Zerumbone as the most abundant component (37% and 40.1%). Zerumbone content of rhizome oil of *Zingiber ottensii* Val. from Bandung is lower than them. The different composition of essential oil could be due to different organs, time of harvest, or environment condition.

Trans-caryophyllene has been reported to have some pharmacological activity such as anti-inflammatory, antimicrobial, and analgesic^{1,3,5} while 1-4-terpineol also has anti-inflammatory and antimicrobial activity^{8,12}. The other major compound of rhizome oil, Zerumbone, has antiproliferative activity.^{10,14,15,19} This study reveals that essential oils of leaves and rhizome of *Zingiber ottensii* Val. from Bandung, Indonesia are potentially anti-inflammation, antimicrobial, or antiproliferative. However, further study has to be conducted.

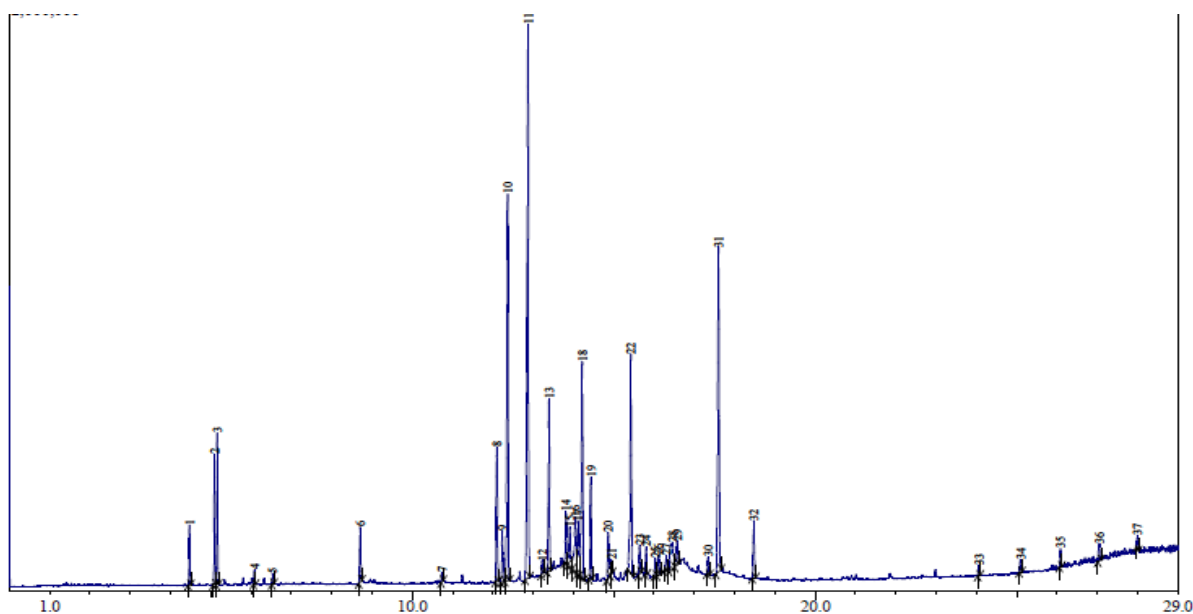


Figure 1: The chromatogram of leaves oil

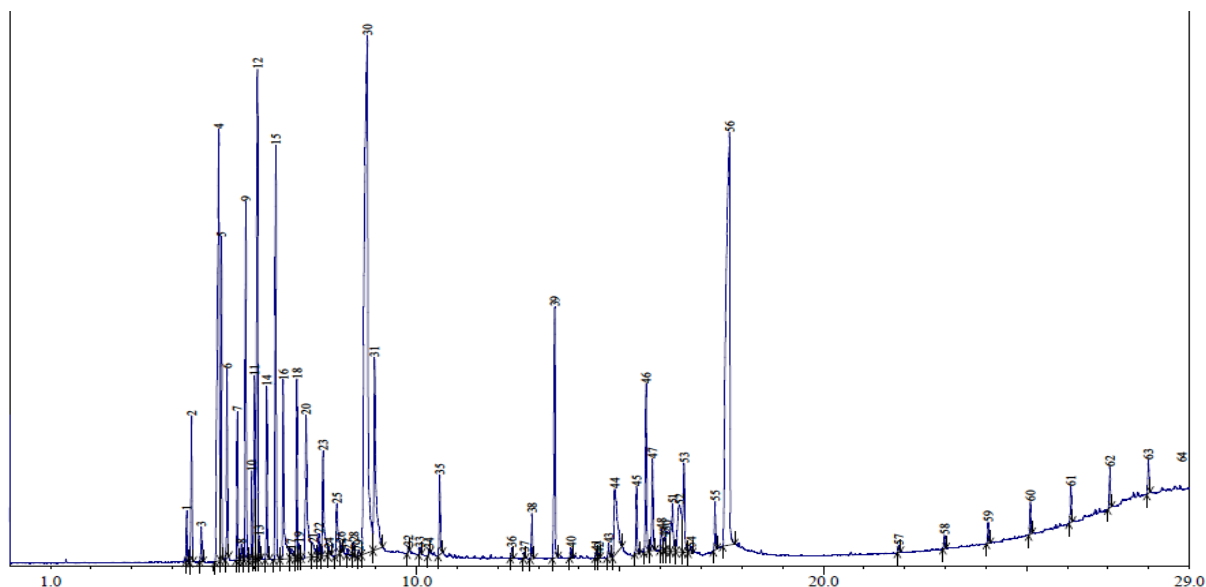


Figure 2: The chromatogram of rhizome oil

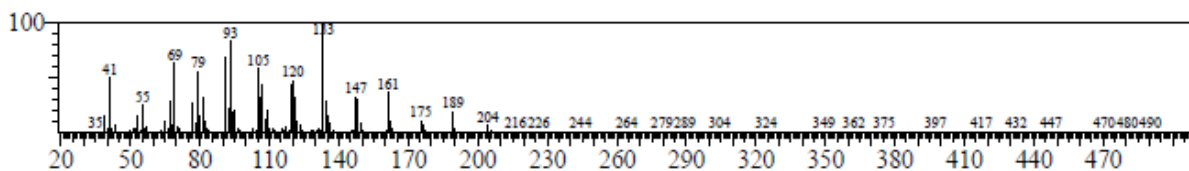


Figure 3: MS spectra of trans-caryophyllene from *Zingiber ottensii* Val. Leaves

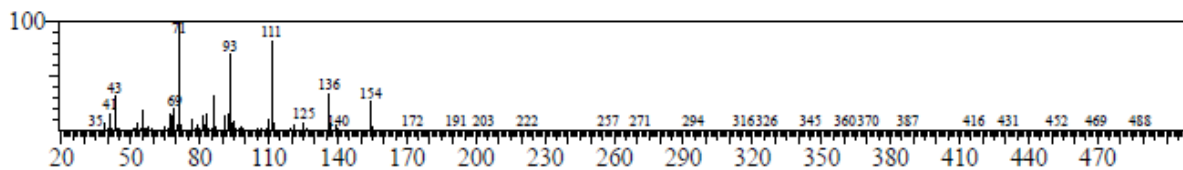


Figure 4: MS spectra of 1-4-terpineol from *Zingiber ottensii* Val. rhizome

Table 1
 Main components of leaves and rhizome oil

S.N.	Compound	Percentage (%)	
		Rhizome oil	Leaves oil
1	1-4-terpineol	16.55	1.41
2	Zerumbone	14.23	11.4
3	Sabinene	8.6	2.76
4	1,8-cineole	5.84	t
5	γ -terpinene	4.75	t
6	α -terpinene	3.58	-
7	2- β -pinene	3.49	3.15
8	α -terpineol	3.47	-
9	α -humulene	3.32	4.87
10	Trans sabinene hydrate	2.53	-
11	dl-Limonene	2.31	-
12	Elemol	2.02	1.63
13	β -selinene	1.96	t
14	β -eudesmol	1.8	-
15	α -terpinolene	1.71	-
16	1-terpineol	1.61	-
17	Trans β ocimene	1.56	-
18	α -pinene	1.37	1.04
19	Longifolenaldehyde	1.33	-
20	L-Phellandrene	1.28	-
21	2,5,9-trimethyl-cycloundeca-4,8-dienone	1.00	t
22	Trans-Caryophyllene	T	19.62
23	β -elemene	T	12.34
24	1,5-cyclodecadiene	-	7.74
25	(-)-Caryophyllene	T	6.93
26	α -copaene	T	3.6
27	γ -gurjunene	-	2.91
28	δ -cadinene	-	2.54
29	Veridiflorol	-	2.13
30	E,e- α -farnesene	-	1.9
31	KW3 AUS epiglobulol	-	1.67
32	Albicanol	-	1.62
33	Germacrene-d	-	1.39

t : trace, < 1%

Conclusion

Essential oils of leaves and rhizome of *Zingiber ottensii* Val. from Bandung, Indonesia have different main components. The essential oil of *Zingiber ottensii* Val. leaves contains 37 components with main component respectively as trans-caryophyllene, β -elemene, zerumbone, 1,5-cyclodecadiene, (-)-caryophyllene while essential oil of rhizome contains 64 components with main component respectively as 1-4-terpineol, zerumbone, sabinene, 1,8-cineole, and γ -terpinene.

Acknowledgement

Authors gratefully acknowledge the financial support provided by Bandung School of Pharmacy, Bandung through Unggulan Research funding.

References

1. Astani A., Reichling J. and Schnitzler P., Screening for antiviral activities of isolated compounds from essential oils, *Evid. Based Complement and Alternat. Med.*, **2011**, 1-8 (2011)
2. Baser K.H.C. and Buchbauer G., Handbook of essential oils: science, technology, and applications, CRC Press-Taylor and Francis Group, New York, USA (2010)
3. Chavan M.J., Wakte P.S. and Shinde D.B., Analgesic and anti-inflammatory activity of Caryophyllene oxide from *Annona squamosa* L. bark, *Phytomedicine*, **17**, 149–151 (2010)
4. Chantaranthai C., Palaga T., Karnchanatat A. and Sangvanich P., Inhibition of Nitric Oxide Production in The Macrophage-Like Raw 264.7 Cell Line by Protein from The Rhizomes of Zingiberaceae Plants, *Preparative Biochemistry & Biotechnology*, **43**, 60-78 (2013)
5. Fernandes E.S., Passos G.F., Medeiros R., da Cunha F.M., Ferreira J., Campos M.M., Pianowski L.F. and Calixto J.B., Anti-inflammatory effects of compounds alpha-humulene and (-)-trans-caryophyllene isolated from the essential oil of *Cordia verbenacea*, *Eur. J. Pharmacol.*, **569**, 228–236 (2007)
6. Giwanon R., Thubthimthed S., Rerkam U. and Sunthorntanasart T., Antimicrobial activity of terpinen-4-ol and sabinene, *Thai J Pharm Sci.*, **24(Suppl)**, 27 (2000)
7. Habsah M. et al, Screening of Zingiberaceae extracts for antimicrobial and antioxidant activities, *Journal of Ethnopharmacology*, **72**, 403–410 (2000)
8. Hart P.H., Brand C., Carson C.F., Riley T.V., Prager R.H. and Finlay-Jones J.J., Terpinen-4-ol, the main component of the essential oil of *Melaleuca alternifolia* (tea tree oil), suppresses inflammatory mediator production by activated human monocytes, *Inflamm. Res.*, **49**, 619–626 (2000)
9. Hasimun P., Adnyana I., Valentina R. and Lisnasari E., Potential Alpha-Glucosidase Inhibitor from Selected Zingiberaceae Family, *Asian J Pharm Clin Res*, **9(1)**, 164-167 (2013)
10. Jegannathan S.D., Arul S. and Dayalan H., Zerumbone, a Sesquiterpene, Controls Proliferation and Induces Cell Cycle Arrest in Human Laryngeal Carcinoma Cell Line Hep-2, *Nutrition and Cancer*, **0(0)**, 1-8 (2016)
11. Karnchanatat A. et al, Zingipain, A Cysteine Protease From *Zingiber ottensii* Valetton Rhizomes With Antiproliferative Activities, *Preparative Biochemistry & Biotechnology*, **41**, 138–153 (2011)
12. Li L., Li Z.W., Yin Z.Q., Wei Q., Jia R.Y., Zhou L.J., Xu J., Song X., Zhou Y., Du Y.H., Peng L.C., Kang S. and Yu W., Antibacterial activity of leaf essential oil and its constituents from *Cinnamomum longepaniculatum*, *Int J Clin Exp Med*, **7(7)**, 1721-1727 (2014)
13. Malek S.N.A., Ibrahim H., Lai H.S., Serm L.G., Seng C.K., Yusoff M.M. and Ali N.A.M., Essential Oils of *Zingiber ottensii* Valet dan *Zingiber zerumbet* (L) Sm from Sabah, Malaysia, *Malaysian Journal of Science*, **24**, 49–58 (2005)
14. Sehrawat A., Arlotti J.A., Murakami A. and Singh S.V., Zerumbone causes Bax and Bak-mediated apoptosis in human breast cancer cells and inhibits orthotopic xenograft growth *in vivo*, *Breast Cancer Res Treat.*, **136(2)**, 429–441 (2012)
15. Sun Y. et al, Zerumbone induces apoptosis in human renal cell carcinoma via Gli-1/Bcl-2 pathway, *Pharmazie*, **68(2)**, 141-145 (2013)
16. Thubthimthed S., Limsiriwong P., Rerk-am U. and Sunthorntanasart T., Chemical Composition and Cytotoxic Activity of the Essential Oil of *Zingiber ottensii*, *Proc. Wocmap III*, **1**, 107-109 (2005)
17. Tiengburanatham N., Boonmee A., Sangvanich P. and Karnchanatat A., A Novel α -Glucosidase Inhibitor Protein from the Rhizomes of *Zingiber ottensii* Valetton, *Appl Biochem Biotechnol*, **162**, 1938–1951 (2010)
18. Yodjun M., Karnchanatat A. and Sangvanich P., Angiotensin I-Converting Enzyme Inhibitory Proteins and Peptides from the Rhizomes of Zingiberaceae Plants, *Appl Biochem Biotechnol*, **166**, 2037–2050 (2012)
19. Zhang S. et al, Zerumbone, a Southeast Asian Ginger Sesquiterpene, Induced Apoptosis of Pancreatic Carcinoma Cells through p53 Signaling Pathway, *Evidence-Based Complementary and Alternative Medicine*, doi: 10.1155/2012/936030 (2012).